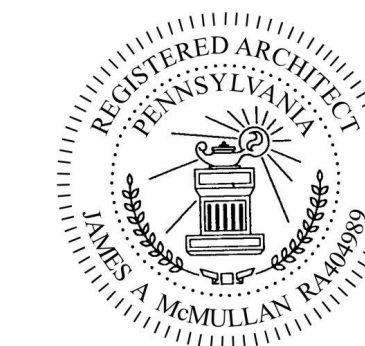




1273 Washington Pike, Bridgeville, PA 15017
t. 412.257.9010



ISSUE:

Issued for Permit
08.05.2016

PROJECT: 16-018

Hampton Inn & Suites

New Stanton, PA 15672

OWNER:

Stanton Hospitality LLC

52 Blueberry Lane,
Grove City, PA 16127

THESE DRAWINGS ARE FOR REVIEW OF DESIGN AND SCOPE DESCRIPTION ONLY. NO REPRESENTATION IS MADE TO THE ACCURACY OF THE DRAWINGS WITH RESPECT TO EXISTING DIMENSIONS OR CONDITIONS. ALL CONSULTANTS AND CONTRACTORS MUST VERIFY ANY AND ALL DIMENSIONS AND CONDITIONS WHICH ARE CRITICAL TO THEIR WORK. THESE DRAWINGS ARE INSTRUMENTS OF SERVICE AND ARE THE INTELLECTUAL PROPERTY OF JMAC ARCHITECTS. ANY UNAUTHORIZED USE OR REPRODUCTION IS PROHIBITED.

[illegible]

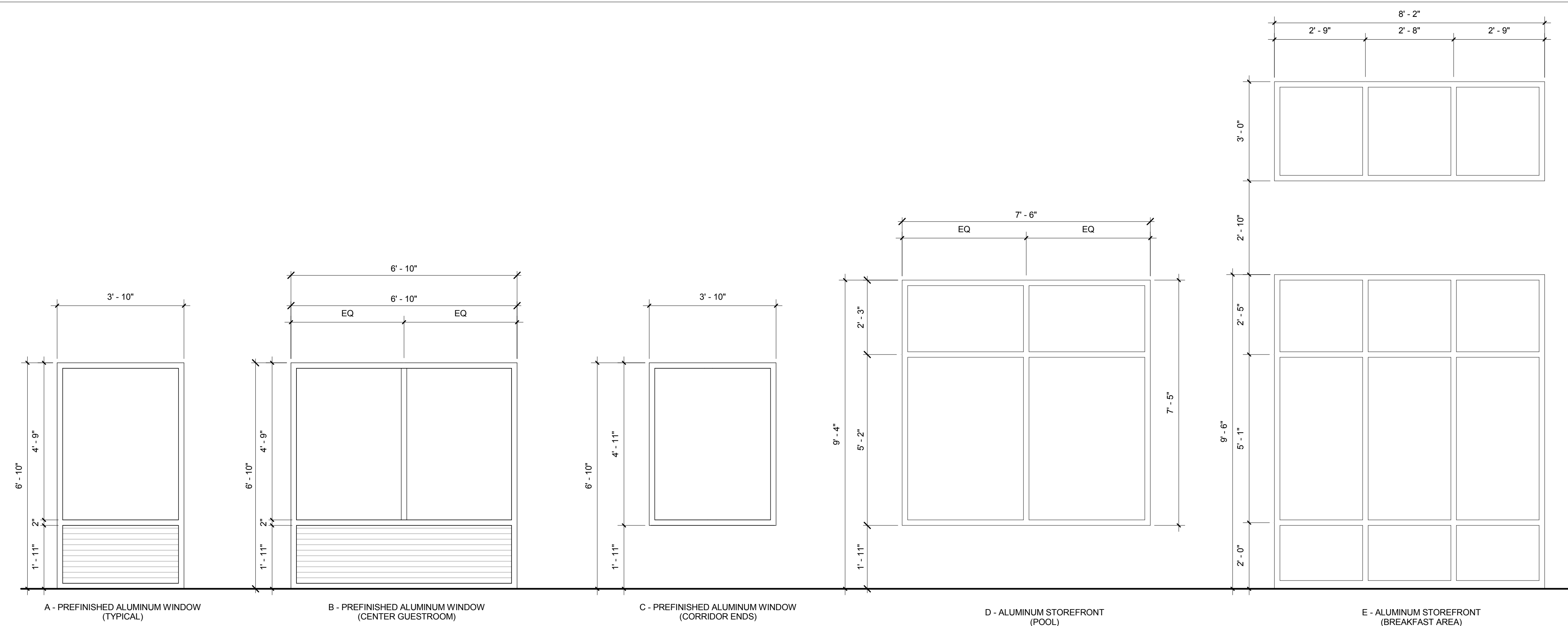
No.	Issue Date	Project Status
-----	------------	----------------

Window and Glazing Schedule and Details

As indicated

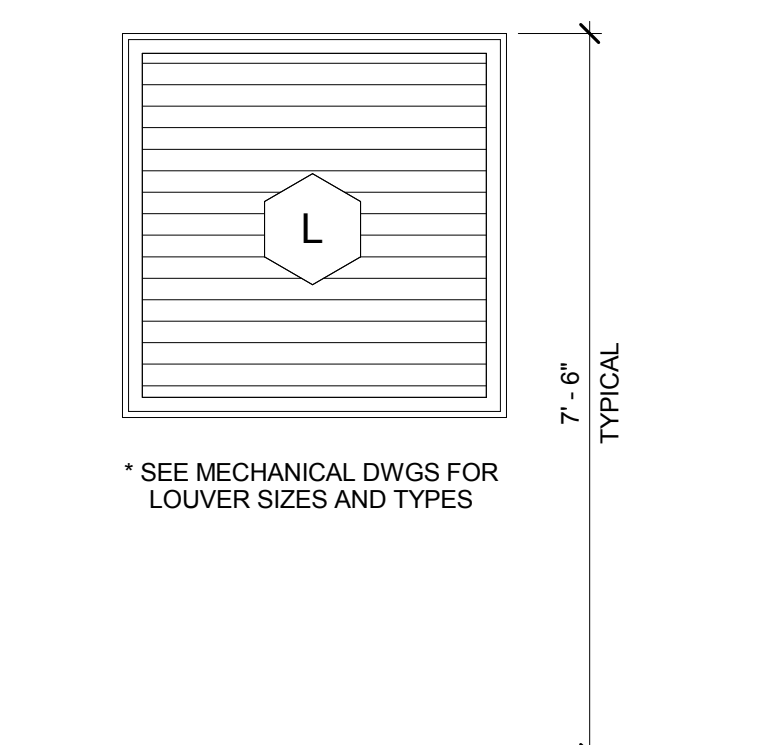
A-902

© 2016 JMAC Architects

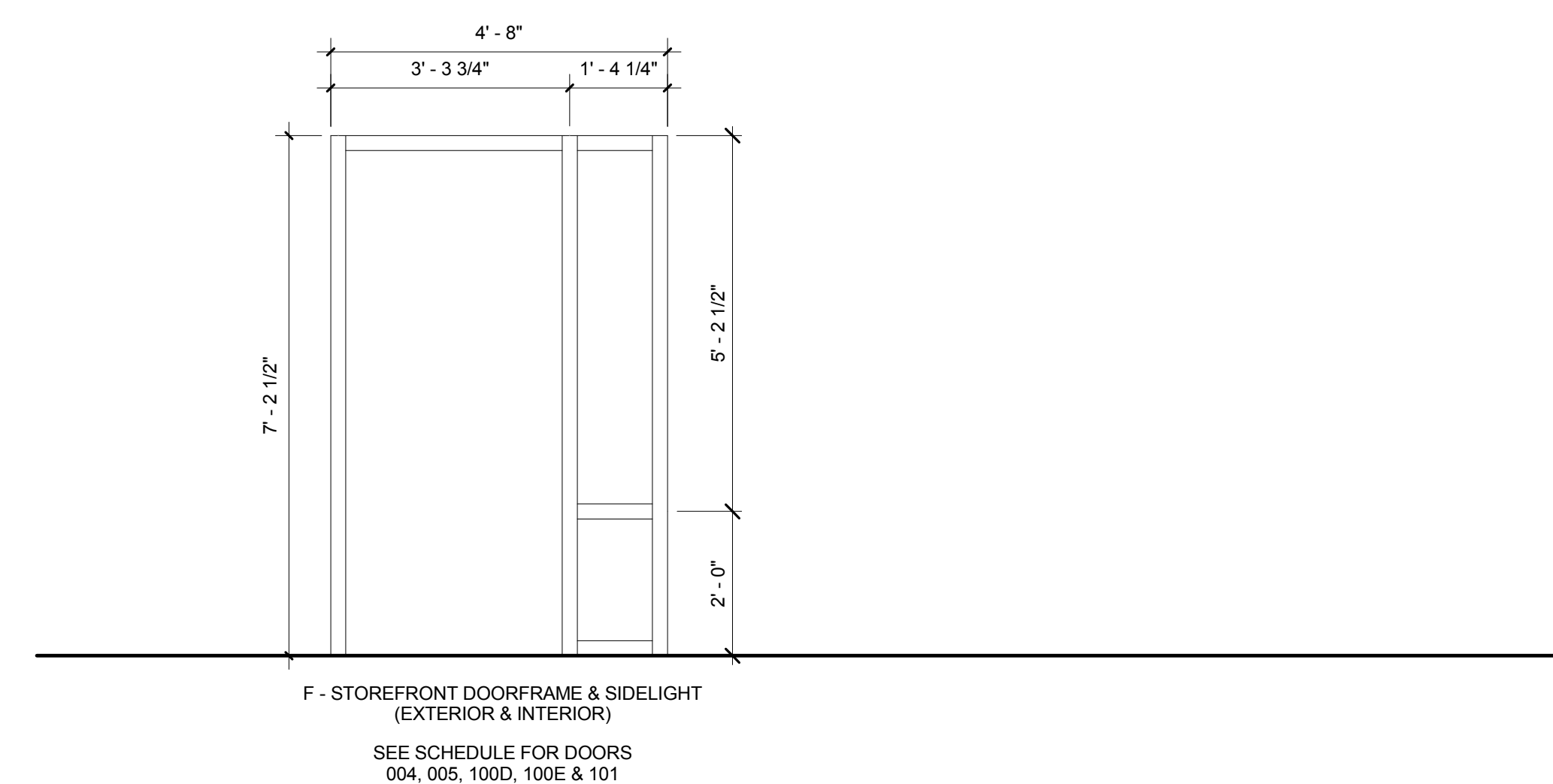


Window Types

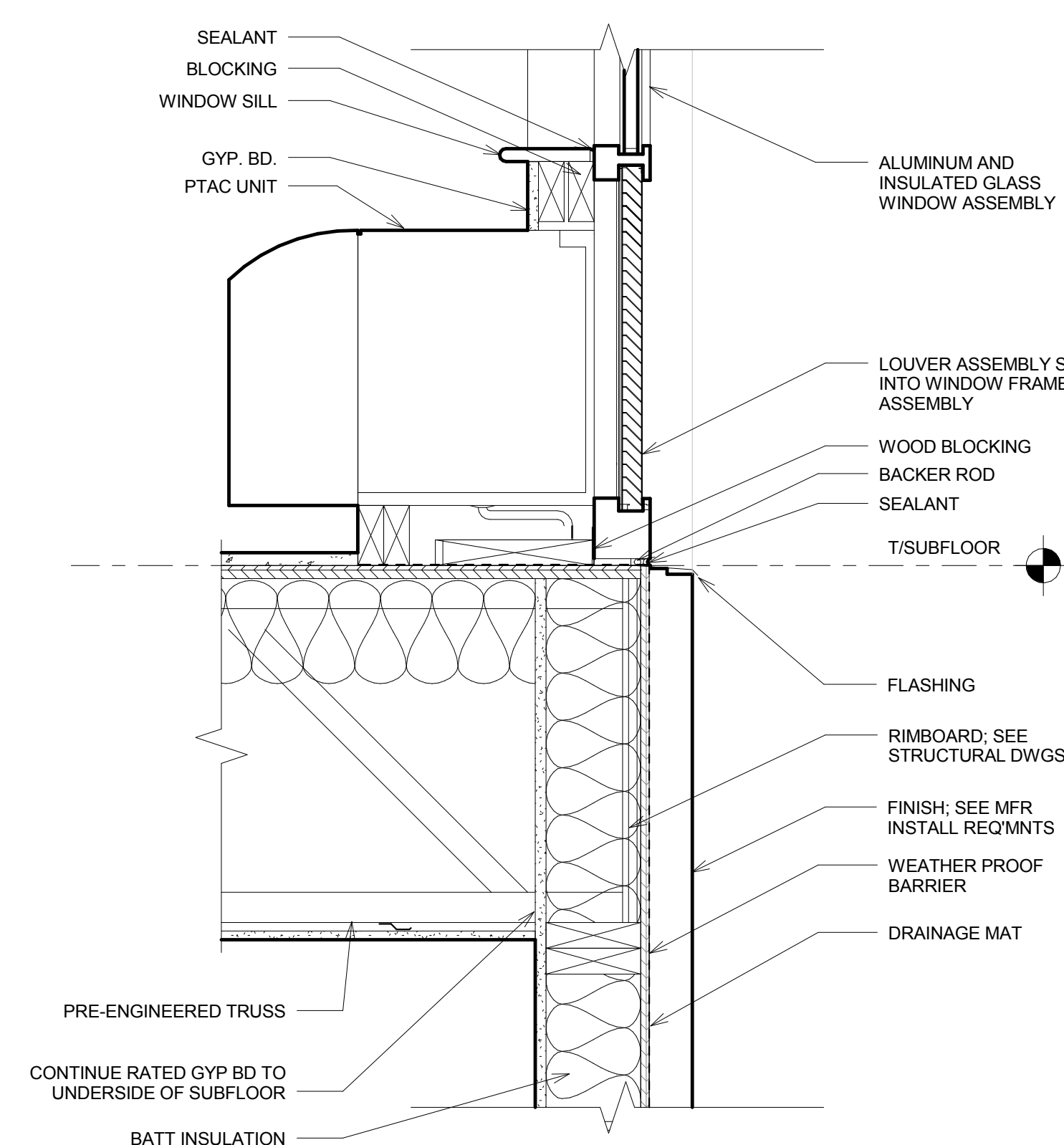
*QUAKER COMMERCIAL OR EQUAL APPROVED ALUMINUM FRAME WINDOW AND LOUVER



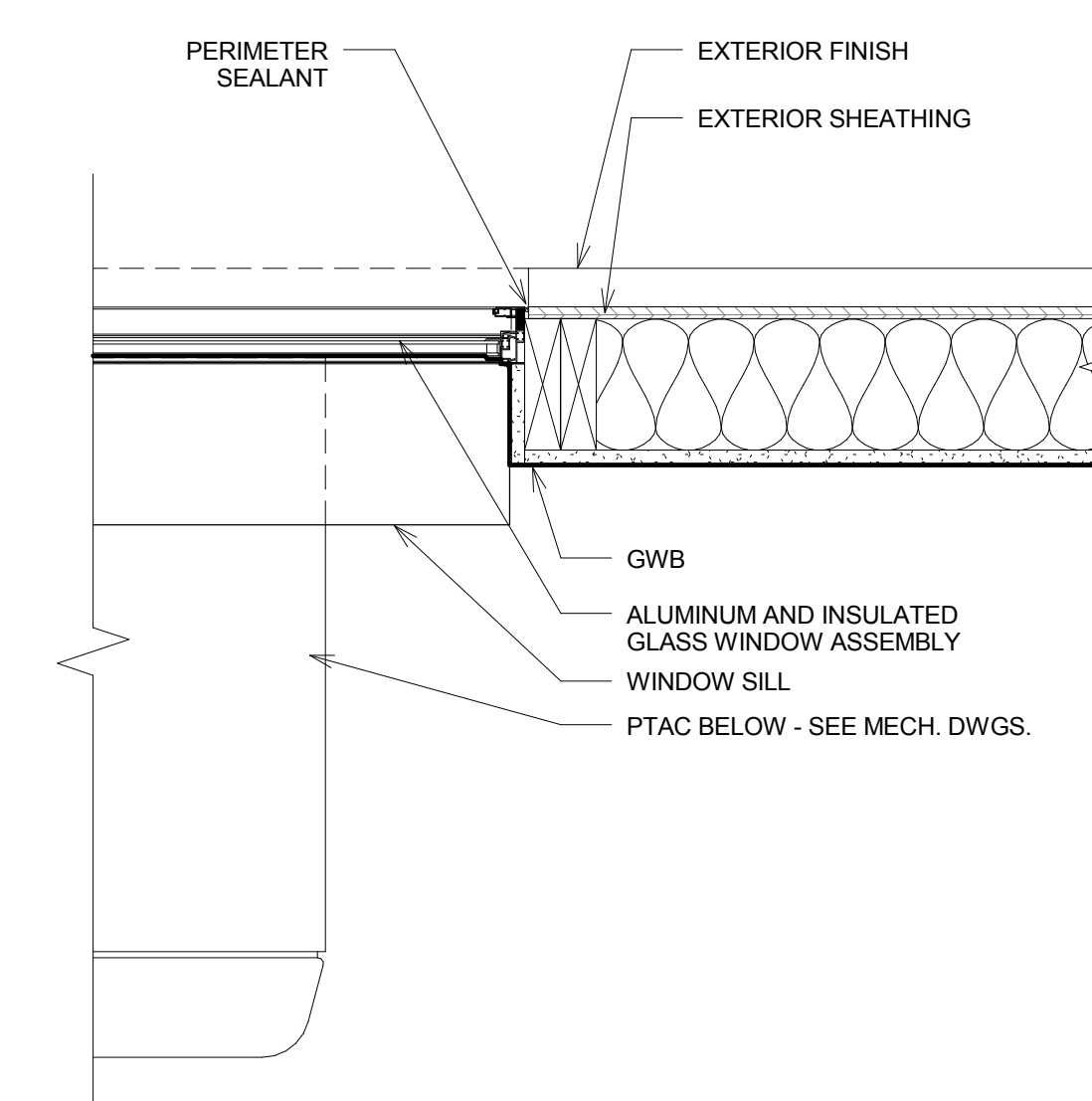
Other Fenestration Types



Storefront Types



1 Typical Sill Detail
1 1/2" = 1'-0"



2 Typical Jamb Detail
1 1/2" = 1'-0"